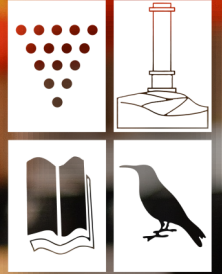


Callington Community College

2026



**Build on your strengths
Broaden your horizons**

Welcome

Dear Students, Parents and Carers

Thank you for your interest in C6 - Callington Community College Sixth Form.

We pride ourselves on our strong relationships with pupils and the strong sense of community that exists across the College. Our students have many wonderful opportunities to get involved in local community events and have a strong say in what their provision looks like. They have an active student voice and their Sixth Form is very much modelled on a typical university campus, with their own bespoke facilities, to include study areas, dedicated post 16 staffing, a common room and a very active student union. We also recognise that a 16 year old is not extraordinarily different between June and September of one summer and that the transition to Sixth Form studies can be quite challenging. We believe in the importance of an effective transition programme and supporting students in developing their independent study habits, so that they can be highly successful and make the necessary adjustments to Sixth Form life. A comprehensive enrichment programme ensures our students have access to support and advice across all their subjects and are fully prepared for whatever their next stage of education/work is.

Our most recent Ofsted inspection recognised the valuable contribution our Sixth Form affords our students identifying "The Sixth Form provides students with a good quality of education. Students study a wide range of courses and achieve well.

Students told inspectors how much they value the support and high-quality teaching they receive." We are very proud of our Sixth Form provision and the achievements our young people make as a result. Please do come and see us, you are always welcome!

Wendy Ainsworth
Principal



Education

is the most powerful weapon

which you can use to change the world!

Nelson Mandela



Your future starts with C6!

“ Coming to Callington for Sixth Form was one of the best decisions I ever made.

The support, guidance and friendly atmosphere helps you to stay focussed and achieve the best.

The gap between GCSE and A level is huge, so coming to the right place for studying is so important.

Despite the gamble of coming to a new school and how overwhelming it can be initially, Callington Sixth Form has helped me find my feet in little to no time.

I cannot be more thankful for the support from the teachers, (especially Tammy) who have been there every step of the way in setting me up for success.” - Jaz





“ C6 has been a great choice for my sixth form journey.

The teachers have helped me every step of the way with them constantly pushing me and encouraging me to do my best at any time throughout the journey. The small size means there is a personal and individualised teaching style with all teachers having a good learning relationship with each student.

The separate sixth form area makes you feel separate from the rest of the school giving an independent learning feel like you would in any further education setting. The teaching style and encouragement for independent learning helps prepare you for a university student but the work by pastoral staff will support you with any journey you wish to make and make sure you succeed in C6.” - Matthew



WHY CHOOSE US?



Callington College is the ideal choice for C6 students seeking a rewarding educational experience. One of the standout features of our Sixth Form is its commitment to providing smaller class sizes, ensuring that students receive personalised attention and a tailored learning environment. This individualised approach is complemented by an abundance of one-on-one tutoring, designed to empower each student to reach their highest potential and achieve outstanding academic results.

C6 places a strong emphasis on pastoral care. The staff are dedicated to creating a supportive and nurturing atmosphere where students can thrive emotionally and mentally. This not only contributes to academic success but also fosters a sense of belonging and well-being.

But it's not just about the academics at Callington College. The friendships forged here are nothing short of remarkable, with a tightly-knit community that will undoubtedly lead to lasting relationships. These college years are filled with experiences and moments that create memories to last a lifetime, shaping not only the students' educational journey but also their personal growth and development. Callington College offers C6 students an enriching experience that goes beyond traditional education, making it an exceptional choice for those seeking an outstanding educational and personal development journey.

Be part of our



Confident

Creative

Caring

Cooperative

Curious

Courageous



How do we compare?

Ofsted rates the College on five categories and then gives one overall judgement.

They are:

- The quality of education – Good**
- Behaviour and Attitudes – Good**
- Personal development – Good**
- Leadership and Management – Good**
- Sixth Form Provision – Good**
- Overall effectiveness – Good**



“There are many elements of the report that we are thrilled with, in particular the recognition of us being ambitious, the strength of relationships between staff and students, teachers’ strong subject knowledge and the very strong culture of safeguarding. We will still be deeply committed to providing a quality experience that promotes success, affords opportunity, nurtures and provides emotional, academic and social support for every day.” Mrs. Ainsworth

What is it like to attend this school?

Many sixth-form students commented that they remained at the school because of how well staff know them and care about them.

What does the school do well?

Sixth-form students are particularly enthusiastic about their lessons. They love learning and are eager to share what they know.

Leadership opportunities abound. Pupils can apply for roles such as student council or head boy or girl. They can become ambassadors for a subject, for sports or for promoting positive well-being. Many sixth-form students have sports leadership roles, and others are ambassadors.

Safeguarding

There is a very strong culture of safeguarding. Staff are alert to any signs that a pupil might be at risk. They know what to do if they have a concern. Leaders act swiftly when there are signs that a pupil might not be safe. They intervene early and so reduce the risk of harm. Referrals to other agencies are prompt and appropriate.



Student Leadership & Student Union





The most effective way to do it, is to do it!

Amelia Earhart



Opportunities!





Students in C6 have many experiences during their time in Sixth Form. Our students have travelled to -

ICELAND

DISNEYLAND PARIS

**SKIING &
SNOWBOARDING**

in ITALY

NEW YORK (Spring 2026)



2027

Coming soon!



Academic Outcomes



To enable our Sixth Form students to reach their full potential, we offer a variety of subjects.

Teaching at Post-16 is a real strength in the college and subjects are well resourced. Naturally, this leads to excellent results and high aspirations for our students. Subject teachers form excellent working relationships with their students based on mutual respect and trust, which has a significant and positive impact on individual outcomes.

In addition to excellent teaching and learning, students are supported through a tutor programme which focuses on developing individuals' study skills and personal mindset. This programme is designed to enable students to grow in confidence and successfully navigate the challenges of Level 3 study.

Believe in yourself and all that you are.

Know that there is something inside you

that is greater than any obstacle.

Christian D. Larson



C6 Gets Results!



The students' unwavering hard work, dedication, and unyielding focus on achieving their best has resulted in remarkable outcomes. Last year's cohort has not only achieved fantastic academic results but also the fulfilment of their dreams. Our students that applied to University all secured a place, while others embarked on apprenticeships, gap years, and exciting journeys of travel. This collective success is a testament to their determination and the bright futures that await them. Below you can see some of last years' impressive results:

CAITLIN - AAA

LINNY - A*A*B

MATTHEW - ABBC

LILY - ABB

MILLIE - A*BB

JACK - BCC

ELLIE

LIDDY

Distinction * Distinction, BC

Distinction * Distinction, D

C6 Destinations

Students in C6 at Callington College are well-prepared for their diverse destinations, be it university, apprenticeships, the workforce, gap years, or other exciting opportunities. Here are some examples of the endeavours our recent C6 student alumni are currently pursuing:

WARWICK UNIVERSITY

Biological Sciences

Chemistry

BRISTOL UWE

Primary Education with QTS

Psychology

WARWICK UNIVERSITY

Biological Sciences

WOLVERHAMPTON UNIVERSITY

Paramedic Science

UNIVERSITY OF SHEFFIELD

Electrical and Electronic Engineering

CARDIFF UNIVERSITY

Biomedical Science

QUEEN MARY OF LONDON

Medicine

DBS Institute

Music Production & Sound Engineering

UNIVERSITY OF PLYMOUTH

Adult Nursing

Illustration Criminology

UNIVERSITY OF BIRMINGHAM

Policy, Politics and Economics

ENGINEERING APPRENTICESHIP

Babcock

APPRENTICESHIP

Drystone / Micro-cementing

UNIVERSITY COLLEGE LONDON

Geography (International)

UNIVERSITY FOR CREATIVE ARTS

Interior Design with Professional Practice

UNIVERSITY OF SURREY

Aerospace Engineering

Media & Communication

ARTS UNIVERSITY PLYMOUTH

Film & Screen Arts

PLYMOUTH MARJON UNIVERSITY

Sport Performance

UNIVERSITY OF STAFFORDSHIRE

Professional Policing



You have brains in your head.

You have feet in your shoes.

You can steer yourself

in any direction you choose!

Dr. Seuss

Courses &

Entry Requirements



A Level Courses 2026

Biology
Chemistry
Physics
Mathematics
Sociology
English Language & Literature
Geography
History
Art & Design
Photography
Psychology
Spanish

Other Available Courses 2026

Criminology Level 3 Diploma

Level 3 Sport & Physical Activity

(Foundation Diploma & Diploma options available)

RSL Level 3 Music

(Diploma & Extended Diploma option available)

Enrichment Options

EPQ (Extended Project Qualification)

Core Mathematics

HSLA (Higher Sport Leadership Award)

GCSE English Resit

GCSE Mathematics Resit



A Level Courses 2026

Biology



Entry Requirements

Minimum:

Standard Entry Requirements:

5 GCSE's at a grade 4 or above and Grade 5 in Biology or 5/5 in Combined Science, 5 in Mathematics and 5 in English.

What will you learn:

Biology is an exciting and exhilarating subject. In some ways it can be considered the most demanding of all the sciences, partly because living systems are so complex and partly because biology is a multidisciplinary science that requires a knowledge of chemistry, physics, and mathematics. Biology can be thought of as the decathlon of natural science with a deep connection to the humanities and social sciences.

Through our A Level Biology curriculum, we aim to develop versatile scientists through inspiring our students to appreciate the complexity of life.

The A Level Biology course starts with the foundations of biology through learning about cell structure, microscopy, and biological molecules. Students then progress to learning about exchange and transport and an in-depth study of processes such as respiration and photosynthesis.

Elements of the course:

We enrich our students' understanding through studying each element via a rich web of contexts so that all students develop a framework for fitting together the many things they will learn in this multidisciplinary exploration of life.

Throughout the course we will undertake a variety of theory and practical based work, and will take the opportunity to carry out work in the field.

Where could it take me?

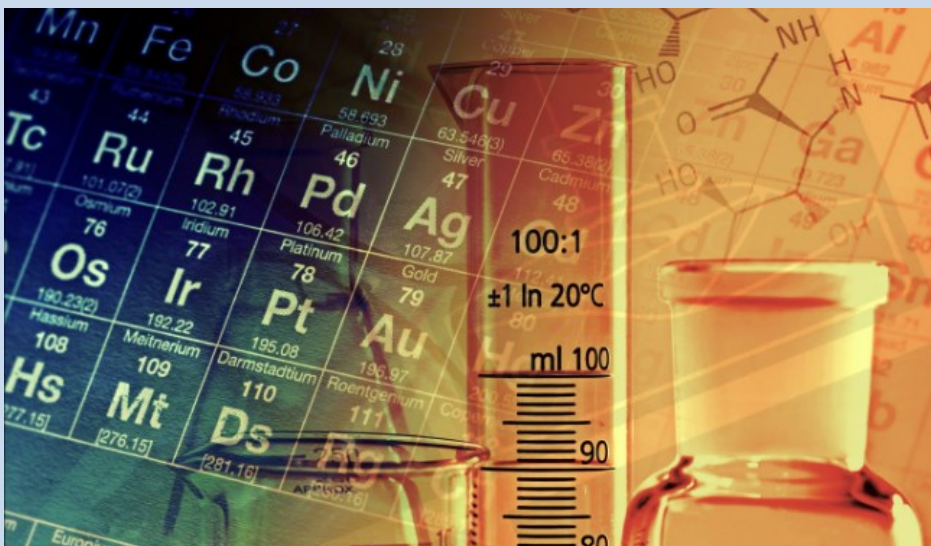
A Level Biology is a highly facilitating course and will provide an entry pathway into a wide variety of academic disciplines. From Biochemistry to Microbiology, Marine Conservation and Coastal Ecology to Plant Physiology, or Medical Sciences to Veterinary Sciences... Biology broadens horizons and provides opportunity.

Assessment:

At A Level all eight units are assessed by means of three written examinations where students are required to answer structured questions. Some responses require extended writing. All examinations will be taken at the end of the two-year course. Biology is fundamentally an experimental subject. Students will have numerous opportunities to use practical experiences to link theory to reality, and equip them with the essential practical skills that will be examined as part of the terminal written papers.

A Level Courses 2026

Chemistry



Entry Requirements

Minimum:

Standard Entry Requirements:

5 GCSE's at a grade 4 or above and Grade 5 in Chemistry or 5/5 in Combined Science, 5 in Mathematics and 5 in English.

What will you learn:

Students will study the development of the periodic table and learn to understand the subtle trends it unearths. The properties of materials will be studied and students will learn how to perform the calculations that underpin all of chemistry. Students will study the chemistry of crude oil and learn how such a simple material gives rise to the vast array of plastics, medicines and everyday materials. In organic chemistry there is a focus on the chemistry of benzene and phenol and how they lead into modern drug discovery and materials research. The work will also encompass physical chemistry, understanding the behaviour of acids, equilibria, energetics and kinetics. Students will also study aspects of the transition metal elements to understand their unique and complicated behaviour.

Elements of the course:

Practical work underpins all of chemistry and the lessons will endeavour to include experimental work wherever possible, especially during the kinetics topics and of course titrations. We will explore abstract concepts via modelling and simulation We will also research and explore modern issues surrounding the subject to fully appreciate the discoveries being made every day in chemistry and discuss the impact these will have on our lives and future.

Where could it take me?

Anywhere in the world, chemistry is one of the most useful and respected a-Levels and is valued everywhere. It is respected due to its variety and rigour and will open a whole series of doors at higher education. It is the main requirement for any medical course and if anyone has ambition to study medicine, dentistry or veterinary courses, chemistry is essential.

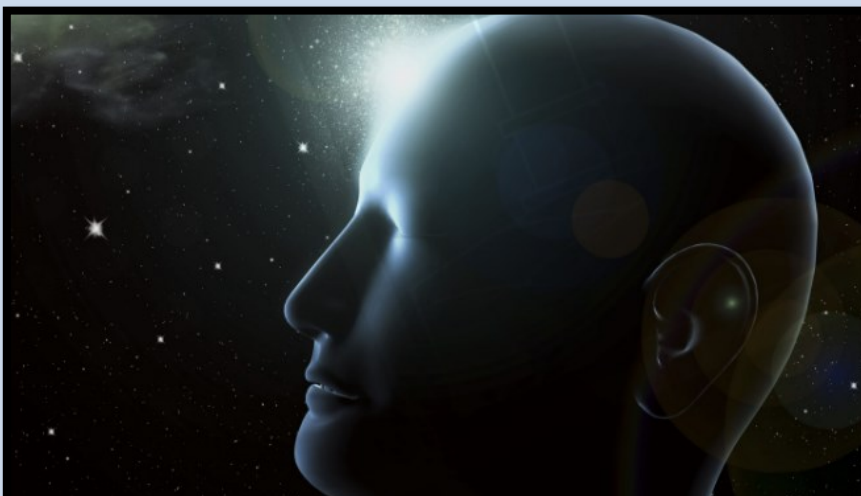
Assessment:

You will be continually assessed in your practical competencies through a minimum of 12 prescribed experiments. There is no longer a practical examination, rather the skills are monitored throughout the course and assessed in the written papers at the end of the course. There are three papers at the end of the two year cycle, Paper 1 examines Physical and Inorganic Chemistry, Paper 2 covers Organic and Physical Chemistry, Paper 3 covers the practical work and any component of the course.



A Level Courses 2026

Physics



Entry Requirements

Minimum:

Standard Entry Requirements:

5 GCSE's at a grade 4 or above and Grade 5 in Physics or 5/5 in Combined Science, 5 in Mathematics and 5 in English.

What will you learn:

Measurements and their errors, Particles and radiation, Waves, Mechanics and energy, Electricity, Further mechanics and thermal physics, Fields, Nuclear physics, An option from Astrophysics, Medial Physics, Engineering physics, Turning points in Physics, Electronics, Physics is everywhere. It plays an important part of modern medical care; CAT scanners, key-hole surgery and cancer treatments all rely on physics. It is responsible for the development of mobile phones, satellite TV and electronic games. It helps us make our cars more economical, reduces the time spent in traffic jams and lets us monitor pollution. Even our sporting heroes rely on physics to go further, faster and higher than ever before. In this course students are introduced to some basic principles and then their impact on how they affect things is considered.

Elements of the course:

Using up to date resources the role of physics in everyday life can be explored and consideration given to what may be possible in the future. The course provide a mixture of theory and practical work to help develop the required skills and knowledge. Part of the learning process involves students continuing their studies after the lesson has finished.

Where could it take me?

Physics is a well-respected A Level, it is very useful for any science based degree as it encompasses high level scientific and mathematical skills. It really is a gateway for many future courses.

Assessment:

At A Level all of the units are assessed by means of three written examinations. The third examination paper assesses students' practical and data analysis skills and the option unit. All examinations will be taken at the end of the two year course.

A Level Courses 2026

Mathematics



Entry Requirements

Minimum:

Standard Entry Requirements:

5 GCSE's at a grade 4 or above and Grade 5 in GCSE Mathematics.

What will you learn:

A-Level units:

- Pure Mathematics and Mechanics
- Pure Mathematics and Statistics
- Pure Mathematics and Comprehension

Elements of the course:

The course aims to build upon skills and techniques studied at GCSE and further extend topics such as trigonometry, coordinate geometry and algebra. It also lays the foundations for new concepts such as calculus and logarithms. Real life scenarios are investigated within Statistics and Mechanics, where students can make links to Economics and Physics and turn their learning into reality.

Where could it take me?

An A-Level in Mathematics is highly regarded by the majority of employers and universities, precisely because of the demands it makes and the skills it develops. Many A-Level Mathematics' students do not of course go onto use their course directly, yet a 2016 study found those with a Mathematics A-level earn 11% more over their lifetime than those without. Some go straight into employment, with fields such as accountancy offering very viable careers straight from a Mathematics A-level. Because the A-Level is comparatively demanding, increasing numbers do go onto degree courses such as accounting, medicine, engineering, forensic pathology, finance, business, consultancy, teaching, IT, games development, scientific research, programming, the civil service, design, construction and astrophysics to name a few.

Assessment:

Each module is assessed at the end of the course by examinations. There is no coursework.



A Level Courses 2026

Geography



Entry Requirements

Minimum:

Standard Entry Requirements:
5 GCSE's at a grade 4 or above and Grade 4 in GCSE Geography.

Special Consideration:

Students who did not study GCSE Geography will be considered provided they meet the minimum standard entry requirements of 5 GCSE's at Grade 4 or above. A meeting with the Head of Geography will be required to discuss.

What will you learn:

Course Structure A Level Units:

- Physical geography (paper 1)
- Human geography (paper 2)
- Contemporary Issues (paper 3)
- Independent investigation

When studying physical geography, students will look at the water and carbon cycles, coastal systems and landscapes, and tectonic hazards including multi-hazard zones such as The Philippines. The Human geography topics include Globalisation where students examine the increasing interconnectedness of our world, Migration Identity and Sovereignty and Regenerating Places. Fieldwork is an essential part of the course and will be used to develop the skills needed to collect data for the independent investigation which students begin at the end of Year 12. Students will learn vital lifelong skills such as decision making, evaluating and synopticity.

Elements of the course:

- There will be a minimum of 4 days fieldwork in preparation for the NEA.
- An NEA launch day hosted at Plymouth University

Where could it take me?

Put simply, Geography opens more doors to young people than nearly any other academic subject. Geographers can go on to study and work in many unique fields such as geology, volcanology, town planners, ocean scientists, conservationists, energy, mining and much, much more! What makes Geography at Callington unique is our team's dedication to supporting every young person achieve their highest potential with bespoke provision in small class sizes. We are also running exciting fieldtrips to places such as Iceland, with all of our A level students having priority for these once in a lifetime experiences.

Assessment:

At A Level there are three written examinations, a human paper and physical paper both worth 30% of the final grade, as well as a synoptic paper worth 20%. Students will also complete an independent investigation (NEA) worth 20% of the final grade.

A Level Courses 2026

History



Entry Requirements

Minimum:

Standard Entry Requirements:
5 GCSE's at a grade 4 or above and Grade 4 in GCSE History

Special Consideration:

Students who did not study GCSE History will be considered provided they meet the minimum standard entry requirements of 5 GCSE's at Grade 4 or above. A meeting with the Head of History will be required to discuss.

What will you learn:

A Level Students will follow a breadth and a depth study on our A Level History course. The Breadth Study - The Quest for Political Stability: Germany 1871 - 1991, looks at the development of the country written about by more historians than any other: The nature of a breadth study allows students to develop a broad understanding of the politics, economy, religion and society of this tumultuous nation. We consider the interpretations of those many historians and students are given the opportunity to share their views through investigation and discussion. The Depth Study - The Wars of the Roses 1437-1487, looks at the fascinating period of British history when the crown changed hands an astonishing 13 times in just 50 years. The nature of this depth study allows students to delve into the archives, using contemporary sources to investigate the ever-changing political, economic and military situations. These two parts of the course are examined at the end, making up 80% of the course. As part of the A Level History course, students will also study and complete a NEA (non-examined assessment), which currently considers various features of the Golden Age of Spain, when the Spanish Inquisition and exploration shaped the most powerful country in the world. At Callington students will be taught by teachers with over 15 years each of A-Level experience. We have an extensive set of resources to support student learning and access to a specific History library.

Elements of the course:

The course will use lots of different teaching methods. Students will carry out group tasks, discussions and presentations in all of which they are encouraged to play an active role. There is the opportunity to use ICT within lessons for the presentation of work. Students will be expected to read a lot in their own time and carry out their own research. In addition to textbooks there is an extensive range of resources available.

Where could it take me?

A level History is a good course to have for a range of occupations and future learning, including Degree courses in History, the law, Archaeology, Politics, Media, Journalism, Tour Guides, Museums. etc.

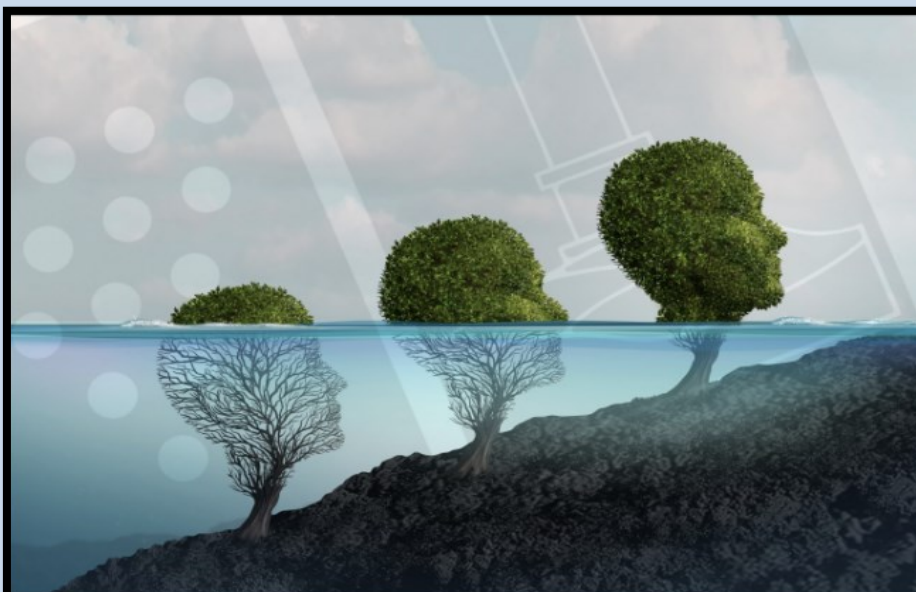
Assessment:

Students will take two examinations at the end of the two year course. The examinations based on the breadth study and depth study each contribute 40% of the marks to the final grade. The personal study which is marked by teachers and moderated by the awarding body contributes the final 20% of the marks.



A Level Courses 2026

Psychology



Entry Requirements

Minimum:

Standard Entry Requirements:
5 GCSE's at a grade 4 or above and Grade 5 in English Language preferred.

What will you learn:

The two year A Level Psychology course enables you to learn about:

Social Influence – conformity and obedience. **Memory** – how memory works and eye witness testimony. **Attachment** – formation of attachments and early attachments. **Psychopathology** – explanations for abnormal behaviours and treatments.

Approaches in Psychology – conditioning, social learning, cognitive and biological approaches. **Research Methods** – research, designs and investigations.

Biopsychology – biological rhythms, the brain and the nervous system.

Issues and Debates – free will, determinism, nature-nurture debate, holism, reductionism, gender and cultural bias, ethical implications and social sensitivity in undertaking research.

Students also select one option from each of the following sections:

Section B – Relationships, Gender or Cognition and Development.

Section C – Schizophrenia, Eating Behaviour or Stress,

Section D – Aggression, Forensic Psychology or Addiction.

Elements of the course:

Throughout the two year course you will have the opportunity to engage in studying and evaluating psychological theories and research by means of group and independent activities, teacher-led sessions, compiling research and undertaking presentations.

Where could it take me?

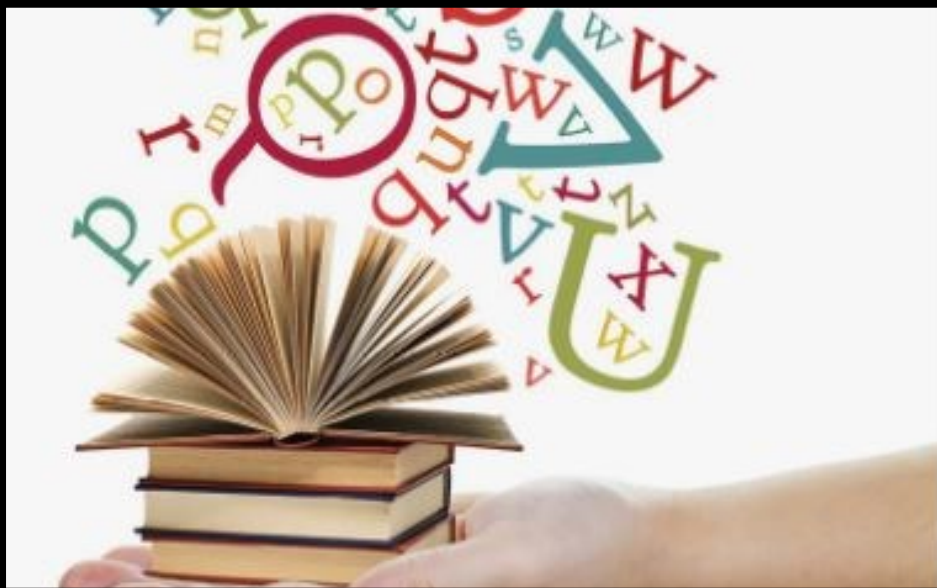
The possibilities for career paths with a Psychology A Level are diverse. Previous students who pursued this subject have ventured into higher education, successfully completing degrees in fields such as Biomedical Science, Psychology, Nursing, Midwifery, and both Primary and Secondary Education.

Assessment:

The assessment for this course is 100% examination at the end of the two years.

A Level Courses 2026

English Language & Literature



Entry Requirements

Minimum:

Standard Entry Requirements:
5 GCSE's at a grade 4 or above and Grade 5 in GCSE English preferred.

What will you learn:

This two year course takes you through a study of integrated literary and non-literary discourses.

The key areas of your learning will be the representation of place, point of view and genre in prose, the forms and functions of poetic voice, the role of the individual in society, conflict in drama, creative transformations of texts, researching and writing. These aim to help you to develop the key critical, creative and analytical skills required both for progression to higher education and for enhanced employability.

Elements of the course:

Paper 1: Telling stories - The aim of this part of the subject content is to learn about how and why stories of different kinds are told. The term 'telling' in the title is deliberately chosen to reflect the twin aspects of how stories are told, and why stories are 'telling', or valuable, within societies. This will consist of the AQA Paris Anthology, a novel and a poetry collection by one poet.

Paper 2: Exploring conflict - This part of the subject content focuses on how language choices help to construct ideas of conflict between people, and between people and their societies. This is comprised of the study of a novel and a play, along with a piece of creative writing and a commentary.

NEA: Making connections – Here, you will learn about methods of language analysis and produce your own investigation, on a topic chosen by you, exploring a literary and non-literary text. You will be required to adopt a close language focus, identifying salient features of language used in the respective texts.

Where could it take me?

As an English A Level, this will act as a facilitating subject for university and higher education choices. Developing your ability to read critically, analyse, evaluate and undertake independent research, you will leave with a set of skills which are invaluable for both further study and future employment.

Assessment:

Two examination papers (each worth 40%) and a non-examination assessment (worth 20%)



A Level Courses 2026

Photography



Entry Requirements

Minimum:

Standard Entry Requirements:
5 GCSE's at a grade 4 or above and Grade 4 in GCSE Photography preferred.

Special Consideration:

Students who did not study GCSE Photography will be considered provided they meet the minimum standard entry requirements of 5 GCSE's at Grade 4 or above. A meeting with the Head of Photography will be required to discuss.

What you will learn:

The A level Photography course enables you to learn:

- How to use a camera.
- How to professionally edit images.
- How to use professional studio equipment.
- Experimenting and exploring a range of photographic and moving image techniques.
- Analysis of images.
- Presentation of coursework and image display.
- Exploration of a range of photography genres.
- Knowledge of photography processes and techniques.

More importantly, you will learn how to explore the world around you in visual form, challenging ideas and contextual links in moving and still imagery. Your journey is decided by you during the personal investigation which runs for ten months. You are able to really investigate an area of interest whilst creating beautiful and striking images.

Elements of the course:

Throughout the two year course you will have to opportunity to complete regular shoots, learn how to professionally edit images, use professional camera and studio equipment.

Where could it take me?

Students who have previously studied A level Photography at Callington Community College have gone on to study Photography at degree level and now work as photographers, photography assistants, commercial and fashion photographers, bloggers, image editors, social media image specialists, web-editors, teachers, journalists.

Assessment:

The assessment of this course is 60% coursework and 40% practical exam at the end of the two years.

A Level Courses 2026

Sociology



Entry Requirements

Minimum:

Standard Entry Requirements:

5 GCSE's at a grade 4 or above and Grade 5 in GCSE English preferred..

What you will learn:

In year 12, students will study the following two topic areas:

Education – functions including its relationship to the economy, class and structure. Achievement of social groups by class, gender and ethnicity. Relationships within schools e.g. teacher/student, student identity and the importance of Educational Policies.

Theory and Methods – data collection and analysis, sources of data, primary and secondary sources, positivism and sociological research methods. The relationship between sociology and social policy.

In Year 13, students will build on their knowledge to study the compulsory element of Crime and Deviance as well as two further topics:

Option 1 - One topic chosen from: Culture and Identity; Families and Households; Health or Work, Poverty and Welfare.

Option 2 - One topic chosen from: Beliefs in Society; Global Development; The Media or Stratification and Differentiation.

Students will also complete the Research Methods content.

Elements of the course:

Sociology is one of the social sciences and is particularly concerned with the study of social life, social behaviour and the historical development of societies. This is a two year course consisting of 3 units. Students will study some compulsory content and then select 2 options from the topics in Sociology. Students will learn to develop sociological skills through examining society from a variety of perspectives that focus on social change, social order and meaning.

Where could it take me?

Sociology has strong links to other social sciences and students of sociology have gone into a wide range of careers such as policing, research, teaching, medicine, politics, civil service, architecture, social workers, journalism and solicitors.

Assessment:

Students will take 3 examinations at the end of the two year course; each examination has the same weighting and when complete will equate to 100% of the Course Examination Total.



A Level Courses 2026

Art & Design



Entry Requirements

Minimum:

Standard Entry Requirements:
5 GCSE's at a grade 4 or above and Grade 4 in GCSE Art preferred.

Special Consideration:

Students who did not study GCSE Art will be considered provided they meet the minimum standard entry requirements of 5 GCSE's at Grade 4 or above. A meeting with the Head of Art will be required to discuss.

What will you learn:

The course is a non- specialist course which means that you will use a wide range of media, techniques and processes. Students will be expected to demonstrate self-expression and independent learning skills. The A Level courses offer opportunities for students to develop new and existing skills and to develop personal ideas and interests. They relate to other arts subjects and offer a balance of practical and academic work using critical and analytical thinking skills.

Elements of the course:

The course consists of 60% portfolio work which is continually assessed and 40% externally set exam. A real interest in Art is important together with good all round skills and some drawing ability, not necessarily from observation. The course consists of studio based work where drawing and painting skills will be enhanced. There will be offsite trips to promote observation work and to put in place opportunities for experimentation. There will also be one gallery visits each years. The department has a computer suite with provision for multimedia development including animation and lens based work.

Where could it take me?

Everything around you has been designed by someone from a creative back-ground, as an artist you could pursue work within design, graphics, illustration and gallery work. Students who have completed this course have gone on to foundation course in art & design, degree courses, apprenticeships and employment.

Assessment:

A Level Students must complete coursework and an externally set assignment. This work is assessed by the teacher and moderated by the awarding body.

WJEC Diploma 2026

Criminology



Entry Requirements

Minimum:

Standard Entry Requirements:

5 GCSE's at a grade 4 or above.

What will you learn:

The Criminology diploma has elements of Psychology, law and Sociology. It is an applied qualification; students will take two internal assessments and two externally assessed examinations.

You will develop an understanding of different types of crime, influences on crime and perceptions of crime.

You will explore the differences between criminal behaviour and deviant behaviour and the theories of why people commit crime.

You will learn about the justice system from crime to courtroom, the skills needed to examine information and the justice of verdicts.

You will learn to evaluate the effectiveness of social control to deliver criminal justice policies.

Elements of the course:

Unit 1: Introduction to Criminological Theories

Unit 2: Changing Awareness of Crime

Unit 3: Crime Scene to Courtroom

Unit 4: Crime and Punishment

Where could it take me?

Useful foundation for Higher Education courses and relevant to many areas of employment for example: Criminology, Forensic Psychology, Sociology, Social Research and Politics.

Assessment:

2 External Examinations

Unit 1 and 3 assessed internally through controlled assessments.

Unit 2 and 4 externally assessed through examinations.



Level 3 Diploma 2026

Sport &

Physical Activity



Entry Requirements

Minimum:

Standard Entry Requirements:
Grade 4 in GCSE Physical Education or a Level 2 Pass in Sport Studies.

Special Requirements:

Students should be able to provide evidence that they are competing or participating regularly in their chosen sport or be engaging in an active and healthy lifestyle.

What will you learn:

This two year course consists of 8 or 11 units depending on whether you choose the Foundation Diploma. Three of the units are mandatory examined units for both and then you will have 5 or 8 further optional units. Students will study units from the following list (externally examined units are in bold):

- **Body Systems and the Effects of Physical Activity**
- Sports Coaching and Activity Leadership
- **Sports Organisation and Development**
- Psychology of Sport
- Practical Skills in Sport and Physical Activities
- Physical Activity for Specific Groups
- **Working Safely in Sport, Exercise, Health and Leisure**
- Organisation of Sports Events
- Performance Analysis
- Sports Injuries and Rehabilitation
- Health and Fitness Testing for Sport and Exercise

Elements of the course:

The course is delivered through interactive lessons, workshops, practical's and work with guest speakers. Students will be taught in a theory and practical context and will have the opportunity to engage and work with professionals from the sports sector.

Where could it take me?

Students may choose Higher Education or a route straight into the Health, Fitness and Leisure Industry. Students who have completed this course have gone on to study in the following fields: Sports Physiotherapy; Sports Media; Sports Marketing; Sports teaching or coaching; Sports Journalism; Personal Training.

Assessment:

The Sport L3 Sport Foundation Diploma is examined in three units and then five additional units.

This course is equivalent to 1.5 A-Levels.

The L3 Sport Diploma is examined in three units with eight additional units for the Diploma.

This option is equivalent to 2 A-Levels.

Level 3 Diploma 2026

RSL Level 3 Music



Entry Requirements

Minimum:

Standard Entry Requirements:

Level 2 Merit or above in BTEC Music, or Grade 4 in GCSE Music plus standard C6 entry requirements .

Special Consideration:

Students who did not study Level 2 Music will be considered provided they meet the minimum standard entry requirements of 5 GCSE's at Grade 4 or above. A meeting with the Head of Music will be required to

Course Options:

There are two options: RSL Level 3 Diploma or Extended Diploma.

The Diploma is equivalent to 2 A-Levels and the Extended is equivalent to 3 A-Levels.

What will you learn:

The RSL Music Level 3 course is a vocational course, which offers a broad basis of study for the music sector with a focus on performance, developing instrumental technique, music theory and professional practice. A modular course , delivered through assignments which cover musicianship skills such as rehearsal and performance, working as a session musician, music theory and harmony, sequencing and production, understanding musical styles, and planning a career in music. There is also the option and flexibility to study modules covering composition & arranging, studio recording, mixing and more.

For those who really want to specialise in the music sector, there is the option to 'double up' and get a larger music qualification by choosing the extended diploma. Units offered on this pathway include all those already mentioned, plus other tailored to the learner's strengths, interest and areas of challenge. These could include arranging music, studio recording and mixing, music sequencing and production, live sound engineering, lighting for music events, and collaborative composition, amongst many others.

Elements of the course:

With the emphasis on practical music making, this course will appeal to students who wish to develop their playing and/or singing skills, their musical understanding, theoretical musical knowledge and learning about how music fits into society and cultures around the world. A knowledge and understanding of how the music industry works will be an important feature of the course and it should appeal to students with a wide range of musical interests. The course delivery is largely practical in nature and makes full use of the music department facilities. There are dedicated practice rooms, performance rooms with PA, a recording studio and teaching rooms with computer suites and relevant software.

Where could it take me?

This course will prepare you for higher education (university) or employment. It will provide an introduction to the study of music sector, and give you the underpinning knowledge and skills needed to meet industry requirements. The course develops the transferable and higher order skills so highly regarded by HE and employers.

Assessment:

Parts of the course are externally assessed. The remainder of the course is asses by the teacher(s) and then verified by the awarding body. The results of assessment for all of the units are aggregated and students are awarded a Pass, Merit, Distinction or Distinction *



A-Level 2026 - Language

Spanish



Entry Requirements

Minimum:

Standard Entry Requirements:

5 GCSE's at a grade 4 or above including GCSE Spanish.

Preferred Requirement:

Grade 5 in GCSE Spanish.

What will you learn:

The A-level specification builds on the knowledge, understanding and skills gained at GCSE. It constitutes an integrated study with a focus on language, culture and society. It fosters a range of transferable skills including communication, critical thinking, research skills and creativity, which are valuable to the individual and society. The content is suitable for students who wish to progress to employment or to further study, including a modern languages degree.

Elements of the course:

Students will develop their knowledge and understanding of themes relating to the culture and society of countries where Spanish is spoken, and their language skills. They will do this by using authentic spoken and written sources in Spanish. The topics that will be covered include: Aspects of Hispanic Society, Multiculturalism in Hispanic Society and Artistic Culture in the Hispanic World and Aspects of political life in the Hispanic World. Students will also study either one book and one film or two books from the lists in this specification. By the end of the course, students will be able to appreciate, analyse and respond critically in writing in Spanish to the work they have studied.

Where could it take me?

Students who have completed this course have gone on to study at university in the following fields: IT, professional, scientific and technical university degrees, Education, wholesale and retail trade, accommodation and food service.... An A level in languages also offers an excellent extra skill to be added to any career paths.

Assessment:

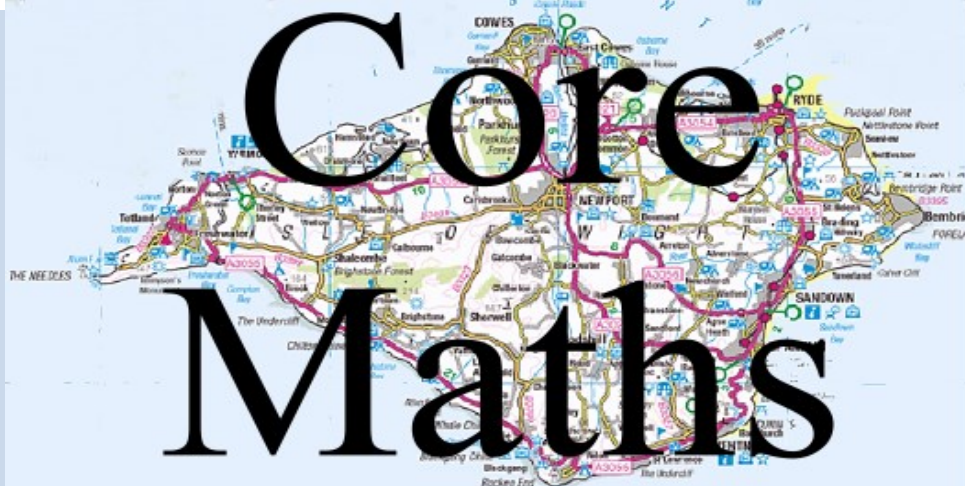
The aforementioned contents will be assessed at the end of the course in 3 different exams:

Component 1: Listening, Reading and Writing, Including translation into English 2hr 30 minutes

Component 2: Writing, Including translation into Spanish. Including one essay on the film studied and one essay on the text studied. 2hrs

Component 3: Speaking. Discussion based on 1 themed photo cards (5-6 mins) and a presentation on an Independent Research Project (2 mins & 9-10 min discussion).

Enrichment Courses 2026



UCAS

Grade	Tariff points
A	20
B	16
C	12
D	10
E	6

WHAT IS CORE MATHS?

Core Maths is a new Level 3 course for students who achieve a Grade 4 or above pass at GCSE Maths. The qualification is designed to prepare students for the mathematical demands of work study and life.

The course has been developed with employers, universities and professional bodies as valuable preparation for higher education and employment.

WHY CORE MATHS?

There has been a tremendous amount of coverage in the Media recently about the UK's gap in basic maths skills. Only 20% of students study maths beyond GCSE in the UK – the lowest rate in leading developed countries in the world; in Japan, this figure is 85%. This puts young people in the UK at a major disadvantage in a global job market.

The Higher Education STEM project, investigating the mathematical and statistical requirements in undergraduate disciplines, reported that many students arrive at university with unrealistic expectations of the mathematical and statistical demands of their subjects which leads to a lack of confidence and anxiety by the students. This course has been introduced to address these issues.

Core Maths has been designed to maintain and develop real-life maths skills. What you study is not purely theoretical or abstract; it can be applied on a day-to-day basis in work, study or life and will include a financial maths element. It will also help with other A-level subjects – in particular with science, geography, business studies, psychology and economics.

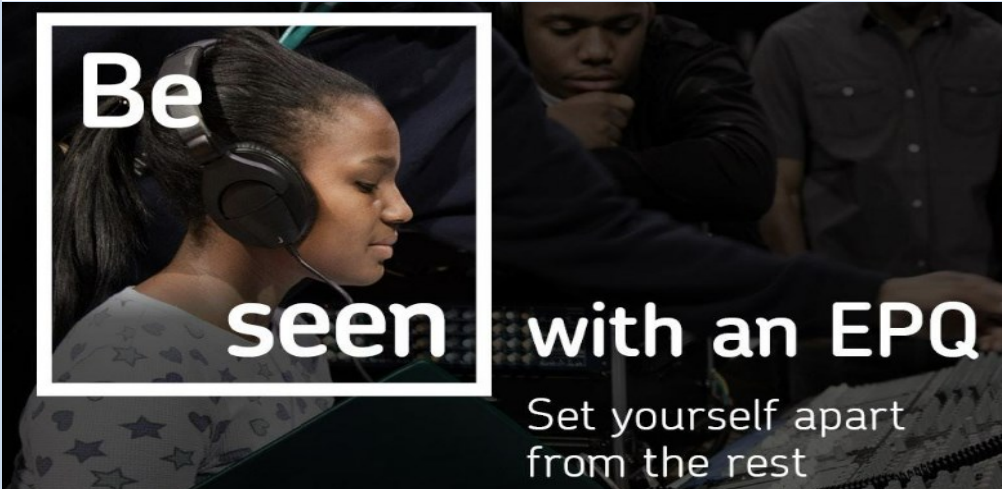
The skills developed in the study of mathematics are increasingly important in the workplace and in higher education; studying Core Maths will help you keep up these essential skills. Most students who study maths after GCSE improve their career choices and increase their earning potential.

Is it suitable for you?

If you enjoy maths but do not want to do the traditional A-level maths involving a lot of calculus and trigonometry, then Core Maths could be for you.

Core Maths involves using skills learnt at GCSE and applying them to model authentic real life scenarios.

Enrichment Courses 2026



What is the Extended Project Qualification (EPQ)?

The EPQ is an A-level standard, standalone qualification designed to extend and develop your abilities beyond the A-level syllabus and prepare for university or your future career.

- It can be taken as an extension of other Level 3 qualifications or vocational qualifications.
- It's worth half an A-level in terms of UCAS points.
- It's recognised by universities and employers.

Our EPQ is popular with students and teachers alike. It provides an opportunity for you to extend your abilities beyond your sixth form course of study, stand out and prepare for university or your future career.

You'll be supported by your EPQ supervisor throughout the duration of the course, but it's down to you to plan the time you need to complete your project.

Extended Project

Grade	UCAS Tariff points
A*	28
A	24
B	20
C	16
D	12
E	8

Be seen by universities

Increase chance of achieving A-level A*-B by up to 29%

Worth half an A-level in terms of UCAS points

Learn how to work independently on your own topic

Receive lower offers from some universities

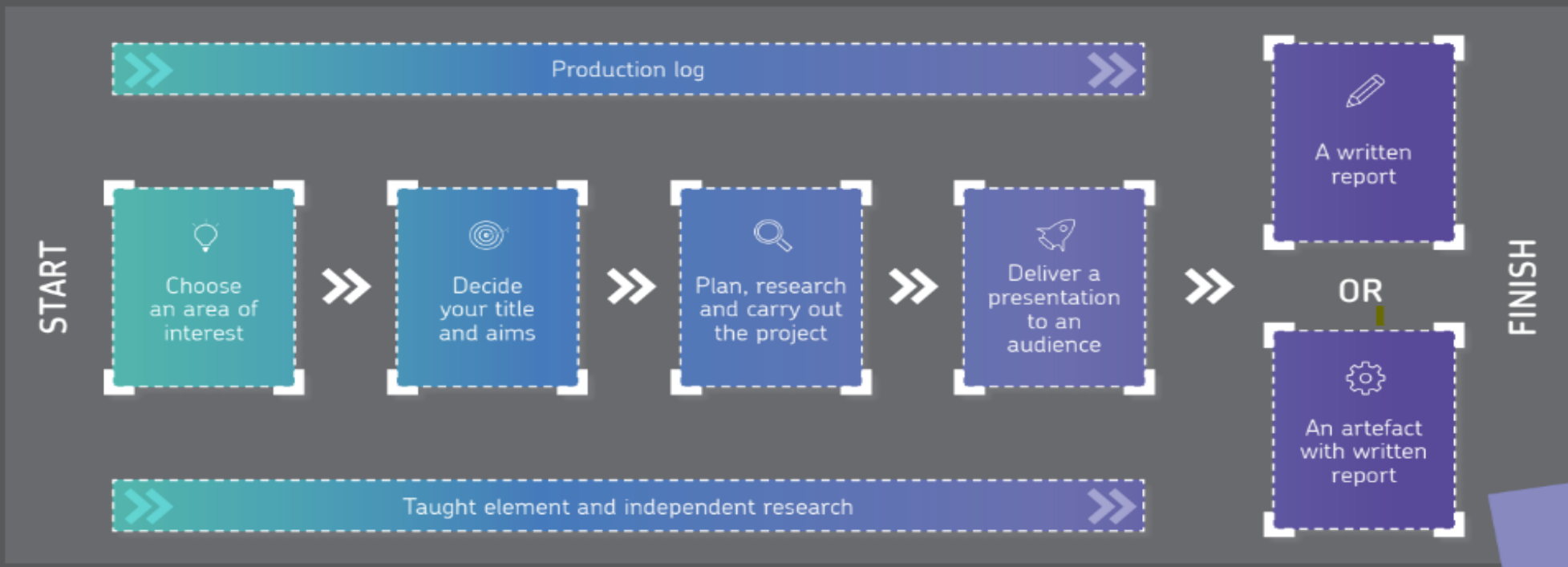
Discuss in university interviews

Learn how to research and reference

Where the journey starts

The EPQ can take two formats – written or practical – so it's suitable for all students. The final piece will either be a written report of around 5,000 words, or an artefact with a written report, which could be, for example, a three dimensional piece of artwork, a play or musical composition, a robot, a model aeroplane, even a website.

How it works:



More benefits of doing the EPQ

Develop study skills by studying and researching independently

Build on your life skills and grow in confidence

Support your future by boosting UCAS points



Enrichment Courses 2026



Sports Leaders

GRADE	UCAS POINTS
Pass	16

Level 3 Higher Sport Leadership Award

What will you learn:

This is a course designed to give students the skills needed to lead groups in safe sporting and recreational activity. The Level 3 Award in Sports Leadership is an ideal step towards achieving national governing body coaching qualifications and promotes the work of volunteers in sport. This award will provide a valuable insight into many careers with the field of sport and recreation as well as developing leadership skills. If your chosen career demands leadership qualities this award is the ideal way to further understanding in this area. This course gives students the opportunity to learn the skills needed to plan and deliver sessions for specialist community groups and schools and to develop their knowledge on coaching/leading on different sports. It helps to develop confidence and the ability to communicate effectively with other people and peers.

Elements of the course:

Leadership ability, attendance and 14 hours of leadership service are the key areas of assessment. This award does not require specific ability in any one sport but aims to develop confidence in students taking responsibility for small groups. The course comprises eight units:

- Developing leadership skills
- Plan, lead and evaluate a sports activity event
- Lead safe sports/physical activity sessions
- Plan, lead and evaluate sports/physical activity sessions for children
- Plan, lead and evaluate sports/physical activity sessions in the community

Where could it take me?

As it is an accredited course, you will officially qualify as a Community Sports Leader, with your name being registered on the Sports Leaders UK register, and it provides a common foundation for the Coaching Schemes of the National Governing Bodies of Sport. This award is looked upon favourably with applications to university and organisations such as Camp America.

Assessment:

This award complements Sixth Form studies as there is minimal written input and no formal written exam. You will complete a Log Book to record your learning and your leadership experiences.

What to choose?

When it comes to choosing your path in the Sixth Form, we understand that making the right decisions can be both exciting and challenging. The options available to you will set the stage for your future, whether you aspire to enter the workforce directly or pursue higher education at university.

In C6, we offer a diverse range of Sixth Form courses to cater to your unique interests and career goals. Whether you're passionate about the sciences, arts or vocational studies, our curriculum is designed to provide you with an array of choices.

We recognize that choosing the right courses can be a significant decision, one that will shape your academic journey and career prospects. Our dedicated team are here to guide you through this process. We encourage you to consider subjects that genuinely interest you, as a genuine passion for a subject often leads to the most successful outcomes. We believe that your enthusiasm is a key driver of your success.

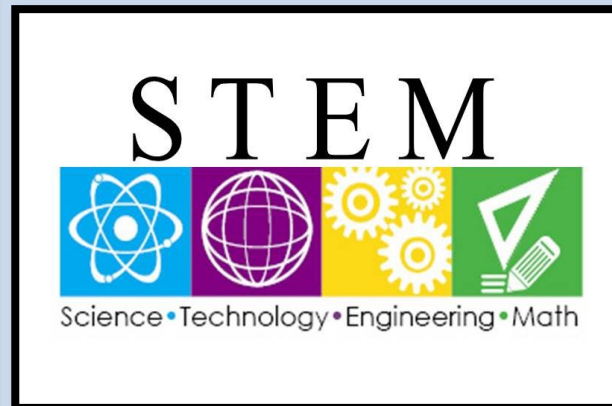
Your choice of courses in the Sixth Form opens doors to numerous opportunities. Our courses are carefully designed to equip you with the skills, knowledge, and qualifications necessary to either enter the workforce directly, pursue apprenticeships, or continue your education at university. We believe in providing you with a solid foundation for a successful future, no matter which path you choose.

Choosing your Sixth Form courses is a significant step, and we are here to support you every step of the way. Our experienced staff are available to answer your questions, discuss your interests, and provide the guidance you need to make informed decisions. Your future is important to us, and we are committed to helping you make the right choices that will lead to a fulfilling and successful journey beyond our college.

Dedicated support for your ambitions!

At C6 we hold the highest aspirations for our students. As such, we offer a bespoke package of support for all of our students to help them to reach their next destinations. Our offer has been carefully constructed with students in mind, to ensure that they have the tools and confidence to apply for the best courses at the top institutions in the country. Every C6 student has the opportunity to benefit from:

- **Timetabled Medicine/Veterinary pathways to support students in preparing to apply for courses and gain work experience.**
- **Timetabled access to an expert tutor to gain the support, experience and training required to successfully complete an Oxbridge or Cambridge application.**
 - **Access to staff who have specialist expertise on STEM career pathways.**
 - **Structured academic mentoring and study support.**



How to apply



Callington Community College **Sixth Form**

1. CONSIDER YOUR OPTIONS AND READ ABOUT THE COURSES....

What courses will you enjoy learning for a couple years? Why do you like them? Will the courses support your future aspirations?

2. RESEARCH THE COLLEGE YOU WANT TO ATTEND FOR POST 16 EDUCATION?

What do you like about the College? What will that College do for you as an individual? Will that College support both academically and pastorally? Does the College have heart?

3. COMPLETE YOUR ONLINE 2026 C6 OPTIONS FORM

<https://forms.gle/n9xRzd33gGEtGWzw9>

4. ATTEND A SHORT INTERVIEW

After submitting your application form, you will be invited to attend a short interview at the College. This is a chance for you to discuss your options and course choices.

5. ACCEPT YOUR OFFER

Following your interview, you will receive an email about your course choices, entry requirements and your C6 course offer.

6. C6 COMMUNICATION

In the summer term you will start receiving information about your start of term arrangements, C6 Bursary and Transportation options etc.

7. GCSE RESULTS

Prior to the GCSE results day you will receive a form to complete to submit your outcome and confirm your courses. Alternatively, external students can send C6 their results via email to **sixthform@callingtoncc.net**

Internal Callington College students will also receive a form to complete to confirm your courses and could be met with their Head of Year or Head of Sixth Form to discuss course choices and entry information.

8. WELCOME TO C6

Prior to your first day in C6, you will be sent information about your start of term arrangements.

Pastoral Care and Support

Callington Community College Sixth Form prides itself on the care and support it provides each and every student. A team of highly experienced and knowledgeable Sixth Form tutors provide daily contact with all students, which includes regular individual students interviews (ISIs), academic and personal mentoring and being the first port of call for both students and parents or carers regarding any concerns.

This is further supported by a programme where Sixth Form students continue to be supported through external organisations, assemblies, careers advice and guidance, workshops and events to continue to support each and every student further.

Students are able to access our pastoral and safeguarding team, as well as the school counsellor. There is a number of external medical and health and wellbeing agencies, if further support is needed.

Those C6 students who are eligible, will also have the opportunity to apply for the Post 16 Bursary. This bursary helps students with the essential costs of their study programme. This can go towards books, food or equipment such as art supplies, calculators etc. It also covers transportation costs to the college, university open days, social events, trips and so much more!



“ Callington sixth form has the best balance between a hard working, study oriented atmosphere and a friendly, relaxed relationship between everyone. Teachers and tutors, (especially Tammy!) are always happy to make time in their day to offer additional support, advice or even just for a chat. You will be pushed to your maximum potential and encouraged to make the very best out of your time here whilst also being allowed the time to unwind and destress if needs be.” - Molly



“We pride ourselves in academic excellence here in C6: from our teachers to our supervised study everyone strives to work hard for our future. However, we also have many exciting and hilarious activities throughout the year, engaging the student body and keeping the sixth form truly alive!” - George

Enrichment and Experience Opportunities

Events - Join our vibrant Sixth Form community, where we believe in the perfect blend of academics and enjoyment! Throughout the year, we host a variety of exciting events, making sure that fun is an essential part of your journey. From the Halloween pumpkin carving competition, the 'C6 Country Hoedown', the festive cheer of the '10 Days of Christmas' to the joyous spirit of our Easter Bake Sale, we not only celebrate holidays in style but also actively contribute to our community. Students organise their own fundraising events that go directly towards supporting our Sixth Form's initiatives such as school trips and social events. A hotly contested and popular activity is the Tutor Group Quiz Championships. The victorious group of each half-term earn the prestigious Championship Breakfast as a reward for their knowledge and teamwork.

At C6, we're not just building a strong academic foundation; we're creating memories and fostering a sense of camaraderie that lasts a lifetime. As the pinnacle of their journey, our Year 13 students eagerly anticipate their 'Leavers Celebration Evening'. This is a wonderful occasion filled with laughter, nostalgia, and the promise of new beginnings. At the highly anticipated 'Prize Giving Evening', we come together to celebrate and honour the exceptional achievements of the upper sixth students. It's a time to recognize the hard work, dedication, and accomplishments that have shaped their academic and personal growth.

C6 Experience - Embrace the opportunities awaiting you in our Sixth Form, where we foster an environment of growth, exploration and continuous learning. Beyond the academic

journey, we understand the importance of enjoying your time in C6. Our spacious independent area invites you to connect with friends and unwind on the comfy sofas with a warm drink in the 'C6 Perk' area. There is also a dedicated Sixth Form outdoor seating area where you can relax during the summer. You will have access to your own kitchen and a vending machine stocked with a variety of drinks and snacks. While our canteen offers a daily menu, you're free to venture into town during breaks for a breath of fresh air and to get some food. As a Sixth Form student you will have sport facilities that you can access during the day such as the well-equipped gym. As young adults, we treat you with the respect you deserve, aiming to make your Sixth Form experience nothing short of amazing!

The ethos behind the Post-16 experience is not just academic study - it extends to developing the whole person, with a real focus on students seeking opportunities both within and outside of college to enrich themselves. Students personalise their timetables to ensure they balance their academic subjects alongside a wide range of enrichment and experience opportunities, which allows them to develop academically, personally and socially.

School Trips - This is a big part of your Sixth Form experience. We try to arrange one or more overseas trip every academic year. This year our students are heading to New York and for those of you who apply to join us in September 2026, the big trip is Dubai in the Spring of 2027.

Student Union - Help us spread the word about the amazing experience you have in C6 to future students. You can become part of the Student Union as a student ambassador and gain experience by attending open events, as well as helping new students at the start of term. Roles within the Student Union can be for the social aspect of C6 or as a Subject or Student Ambassador. There is also leadership roles that you might be interested in applying for as well. You will have to prepare an application and be interviewed to win these positions, thereby gaining valuable experience in how to best present yourself. These experiences will be a valuable addition to your University application or other future endeavours.

Sixth Form Study Centre - Is a separate area within Callington College (a campus within a campus) to enhance your studies and give you the best possible learning experience. There is the Academic Area to complete your coursework in a designated area and a social area for you to have your own individual space to take a break and hang out with your friends. You will also have access to the IT facilities and if you are an Art student you will have access to the art department for you to carry out your independent work.

Lessons From Auschwitz - We offer students the unique opportunity to learn about the history of the Holocaust through a bespoke online learning environment, accessing artefacts, text, film, and a one-day Visit to Poland to the Auschwitz-Birkenau Memorial and Museum. Students will consider the individuals whose lives were affected by the Holocaust and the relevance of the Holocaust today by Taking part in two seminars, led by experts in the history of the Holocaust and Holocaust education, hearing directly from Holocaust survivors, who will share their personal experiences, including during a live survivor testimony and Q&A, participating in a one-day Visit to Poland and sharing what they learnt within their school and wider community.

Ten Tors - The annual Ten Tors event unfolds on the rugged terrain of Dartmoor, leaving a mark on the participants. For many, this challenge becomes a life-changing experience, etching unforgettable memories into their minds. Throughout the year, we will provide comprehensive training, enabling you to partake in the demanding 45 Mile Ten Tors. This rigorous endeavour will test your mental and physical limits.

Work Experience / Higher Education Experience - In Year 12, students will either arrange a work experience placement or dedicate a week to pursuing your higher education aspirations. This week will offer a valuable opportunity to explore your career options and destination goals.

Exclusive Student Deal! - Year 12 and 13 students can grab a discounted gym membership at our local fitness hotspot – **The Zone!**

A word from the Head of Sixth Form

It is with great pleasure that we extend a formal welcome to all prospective sixth form students to C6 - Callington Community College. We understand that as students approach the end of their compulsory educational journey, choosing the right sixth form can be a daunting task. At C6, our commitment is to guide and support you in making an informed decision that aligns with your goals and aspirations.

C6 offers an exciting and dynamic environment in which to study. We are deeply passionate about education and dedicated to ensuring that each and every student reaches their full potential. Our goal is to provide you with the solid foundations necessary for success in future employment, apprenticeships, or higher education choices.

What sets C6 apart is our unique blend of independence and nurture. We believe in empowering our students to take charge of their educational journey while providing the support and guidance needed along the way. Our outstanding pastoral care is our unique selling point. Your well-being and personal development are as important to us as your academic achievements.

Our vision for C6 is to become the most dynamic and exciting school in Cornwall, where both students and staff thrive. We firmly place the student at the heart of everything we do, whether it's in academics, personal growth, or social development. In our safe, happy, and highly supportive environment, each student is valued equally, ensuring that your time at C6 is a rewarding and fulfilling experience.

We are excited to embark on this journey with you and are confident that together, we can help you achieve your goals and reach new heights. C6 is not just a school; it's a community of learners, dreamers, and achievers. We look forward to welcoming you and supporting you as you take the next step in your educational journey.

Once again, welcome to C6, we can't wait to see the incredible contributions you'll make to our community.

With best wishes,
Mrs Tammy Rice
Head of Sixth Form





Education is the passport to the future,

for tomorrow belongs to those who

prepare for it today. *Malcolm X*

WRITE TO US

sixthform@callingtoncc.net

CALL US

01579 383 292

FIND US ONLINE

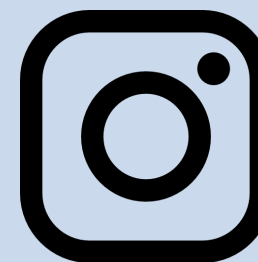
www.callingtoncc.net



VISIT US

Launceston Road
Callington Cornwall
PL 17 7DR

FOLLOW US



[c6callingtoncc](https://www.instagram.com/c6callingtoncc)



C6 Callington Sixth Form

