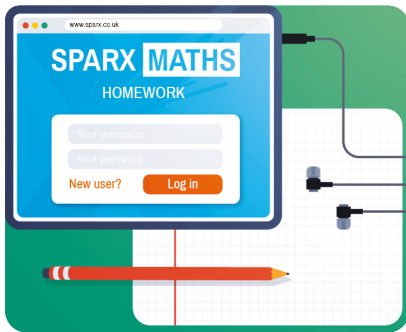


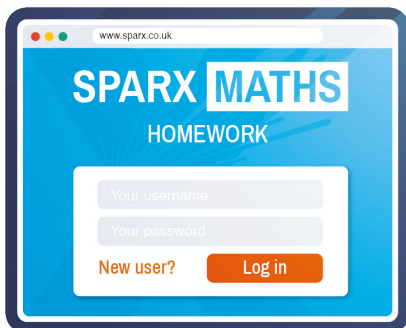
My URL is: <https://sparx.co.uk/studentlogin>

My homework is due on: \_\_\_\_\_



## 1. Find a good working space

- Make sure you have access to a tablet or computer that is connected to the Internet. If you have access to both, you may find it easier to use the tablet.
- Find a desk or table in a quiet room.
- Make sure there is enough space for your tablet/computer and your workbook.
- Ensure you have a ruler, a black/blue pen and a coloured pen to hand.
- Headphones or earphones are useful for watching video tutorials.



## 2. Login

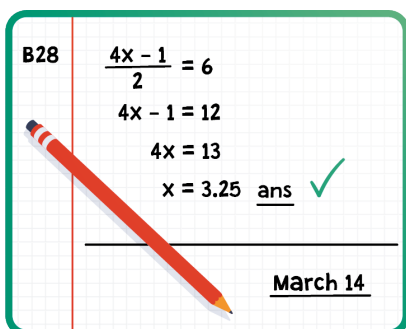
- Go to [sparx.co.uk/studentlogin](https://sparx.co.uk/studentlogin) on your device.
- Select your school.
  - If this is your first time logging in, click on “New User”. You’ll need to enter your invite code from your teacher. If you’ve lost this speak to your teacher as soon as you can.
  - If you’ve logged in before, simply log in with your username and password.



## 3. Check what you have to do

Each week you will see three sections of questions.

- **Compulsory**  
You must correctly answer all of the questions in your Compulsory Homework before your hand-in deadline. These questions are chosen for you individually.
- **Optional**  
You can choose whether or not to do Optional Homework. It’s only half as long as your Compulsory Homework but is great for helping you feel more confident with everything you’ve learnt in maths. It also earns you loads of extra XP! These questions are chosen for you individually.
- **Target**  
You can choose whether or not to do Target Homework. It contains up to 6 questions and will advance your maths skills even further. It is slightly trickier than Compulsory and Optional Homework, but completing it will earn you lots of extra XP! These questions are chosen for you individually.



## 4. Prepare your workbook

- Use a ruler to draw a horizontal line in your workbook underneath the end of your last homework.
- Write today’s date and underline it.
- If there isn’t a margin on the page already, use a ruler to draw one that is three squares wide.

**Bookwork code**

E50  $\frac{2x - 3}{2} = 8$   
 $2x - 3 = 16$   
 $2x = 19$   
 $x = 9.5$  ans

## 1. Answer first in your workbook

- In the margin of your workbook, write down the bookwork code for the question you are working on. This code will be shown at the top of the screen.
- Answer the question next to the code on the page, writing out all of your working.
- Write and underline “ans” next to your answer.

E50  $\frac{2x - 3}{2} = 8$   
 $2x - 3 = 16$   
 $2x = 19$   
 $x = 9.5$  ans ✓

## 2. Then enter your answer

- Check if your answer is correct by selecting the orange “Answer” button, typing in or selecting your answer and then submitting it.

### If your answer is correct

- Write a coloured tick next to it and move on to the next question.
- Do this whenever you get an answer correct, even if it is after a few attempts.

E50  $\frac{2x - 3}{2} = 8$   
 $x - 3 = 8$   
 $x = 11$  ans ✗

**New Bookwork code**

E87  $\frac{2x - 5}{2} = 6$   
 $2x - 5 = 12$   
 $2x = 7$   
 $x = 3.5$  ans ✗

### If your answer is wrong

- Put a coloured cross next to your wrong answer.
- Below it, write down the new bookwork code in the margin (again, it will be shown on screen).
- Write out your new working and answer, then write and underline “ans” next to it.
- Submit your “Answer”.
- Hint: Watch the video tutorial at any time for assistance.
- If you get a question wrong three times in a row then leave it and move on to the next question.
- Remember, if the question is compulsory, you must have answered it correctly by hand-in day. You can ask your teacher for help or come to Homework Club.

## 3. Complete your homework

- To complete your compulsory homework you need to have answered your compulsory questions correctly, not just attempted them all.
- This means all tasks in the compulsory section for that week will be marked as completed.
- Remember to take your workbook into school and hand it in during your maths lesson.

The screenshot shows the Sparx Homework app interface. It features a navigation menu on the left with options for 'Compulsory', 'Optional', and 'Targets'. The main area displays a list of homework tasks, including 'Homework due Sunday 14th July' and 'Homework due Sunday 14th July', each with a 'Completed' status indicator.