




BRINGING INDUSTRY AND EDUCATION TOGETHER

STEM skills shortages represent a real threat to the UK's capacity for growth.

By working together, we can raise young people's aspirations in STEM subjects and invest in the future generation of employees.

A photograph showing a group of four young people (three men and one woman) gathered around a table in a workshop or classroom. They are focused on a piece of electronic equipment, possibly a breadboard or a small circuit board, which is connected to various wires and components. One woman on the left is pointing at the equipment, while the others look on attentively. The background shows shelves with various electronic components and tools.

Working to achieve a world-leading education for all young people across the UK



WHY ENGAGE WITH US?

The demand for STEM skills in the UK has reached a critical point, with the CBI reporting that 77% of businesses expect to need more high-skilled employees in the next three to five years. Offering comprehensive careers information to young people is particularly key and yet despite teachers having the second biggest influence on careers choice, over 20,000 have no CPD budget at all in their school.

Together we can invest in the workforce of the future by raising young people's aspirations in STEM subjects and careers. Our employer offer will benefit you directly, enabling you to support the development of STEM knowledge and teaching in an impactful way, alongside our vision. The programmes we offer are efficient, relevant and local and getting involved in our partnership can enable you to maximise your impact.

EMPLOYER BENEFITS

Evidence shows that effective interactions between young people and those in the world of work plays a key role in helping young people make well informed decisions about future career pathways into education and/or employment.

As an employer you can make a direct impact by working with us on any of our key STEM programmes. Through these interventions, you will be able to:

- support STEM teachers through CPD and up-to-date curriculum materials
- offer specific and sector careers information to young people and their influencers
- engage and develop your employees
- raise your profile within the local community, whilst also expanding your regional and national media presence
- promote your apprentice roles directly to schools and colleges close to your facilities
- support your recruitment efforts, boosting your future technical and graduate talent pipeline

"Getting involved in STEM Ambassador activities is our chance to invest in our current employees and employees of the future. Although it raises the profile of our business, it's not really about that for us. We simply want children to realise that our world of engineering is exciting and you can make a career of it."

Chris Eccles, Managing Director
at Charge Point Technology

OUR KEY PROGRAMMES

STEM AMBASSADORS

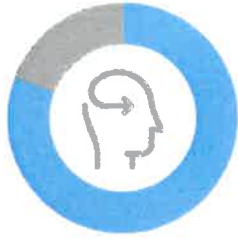
STEM Ambassadors are volunteers who get involved in a variety of activities both in and outside of the classroom, designed to excite young people about STEM subjects and encourage them to consider STEM career pathways and employment opportunities. A community of over 30,000 STEM Ambassadors represent more than 2,500 employers across the UK.

WHAT IS THE IMPACT OF THE STEM AMBASSADORS PROGRAMME?



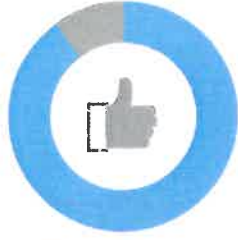
89%

of STEM Ambassadors have increased young people's awareness of STEM careers and the importance of STEM subjects



90%

of STEM Ambassadors help teachers to contextualise the curriculum with up-to-date STEM information



91%

say that volunteering with young people has increased their own job satisfaction and raised the profile of their industry

Our STEM Ambassador Hubs throughout the UK offer a range of resources to help volunteers develop their own skills and increase the impact of their volunteering.



STEM CLUBS AND RESOURCES

STEM Clubs present a practical, hands-on approach to learning and offer students the chance to explore topics outside the school curriculum and timetable, stimulating their interest in STEM careers. STEM Clubs are an excellent way for your employees to work with schools through the STEM Ambassadors programme.

A host of free inspirational activity ideas are available and you can also contribute your own resources to our extensive collection, which contains over 28,000 quality-assured teaching resources.

STEM INSIGHT

STEM Insight offers staff in schools and colleges a unique chance to experience STEM-related work through a placement in an industrial or university setting.

By offering a placement in your business you could build a strong partnership with schools and colleges in your locality to help drive the quality of careers guidance, and support you to develop your talent pipeline for the future.

IMPACT OF STEM INSIGHT:

- inspire teachers about your organisation so they can enthuse their students and inspire them with exciting career paths
- build long term partnerships between your organisation and a school or college to foster further educational opportunities such as work experience and apprenticeships





SCIENCE LEARNING PARTNERSHIPS

Science Learning Partnerships combine local expertise in teaching and learning in science, facilitating CPD, and providing school-to-school support. As an employer you can help our schools to highlight cutting-edge science in both research and industry, to students across all age ranges.

PROJECT ENTHUSE

Project ENTHUSE is a unique alliance of organisations involved in encouraging young people from all backgrounds in the UK into further STEM education and training. Its funding allows the provision of subject specific professional development for teachers and technicians, reaching thousands of teachers each year from schools and colleges in the UK.

HOW TO GET INVOLVED:

As a funding partnership, Project ENTHUSE is looking to work with an increasingly diverse range of organisations in a variety of different ways.

OTHER STEM EDUCATION PROGRAMMES

You can access two inspiring educational programmes, which we manage and deliver in partnership with external agencies. These are:



ESERO-UK

This education project promotes space and the use of space to enhance and support STEM teaching and learning in the UK.



POLAR EXPLORER PROGRAMME

This programme uses the launch of the UK's new polar research ship, the RRS Sir David Attenborough, to inspire the next generation of scientists and engineers.



OUR VISION

STEM Learning's vision is to achieve a world-leading STEM education across the UK, where:

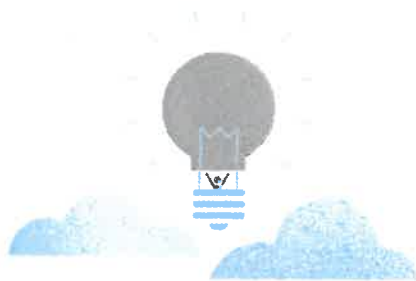
- young people from all backgrounds have the aspiration, knowledge and skills to thrive, with more progressing into STEM-related careers
- employers have access to knowledgeable, talented people with strong STEM skills, increasing productivity, competitiveness and diversity

STEM Learning reaches directly into ALL UK secondary schools and FE colleges, and over three quarters of primary schools.



2 million

young people benefit from 20,000 teachers taking part in our expertly led, professional learning programmes each year



900,000

young people each year are inspired by over 33,000 STEM Ambassadors



195,000

teachers use our website to download over 100,000 resources every month

WHAT ELSE CAN WE OFFER YOU?



CONFERENCE FACILITIES

At our Centre in York, we offer a world-class facility with onsite accommodation, hospitality packages, facilities and expert staff to support your specific needs.



TAILOR MADE WEB PRESENCE

We offer a number of options for your business to acquire a tailor made presence on our website, to enable your business to further develop its partnership with schools and colleges.



BUSINESS SUPPORT WITH EDUCATIONAL NEEDS

From resource development, teacher and employer forums through to bespoke consultancy, we can offer you support with all your school and college engagement and educational programmes.



www.stem.org.uk

National STEM Learning Network

 @STEMLearningUK  /STEMLearningUK