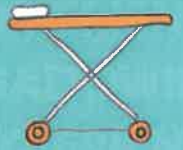


PENINSULA PATHWAYS

TO THE HEALTHCARE PROFESSIONS



Contents



 Introduction

 Primary Years

 Secondary Years

 Pathways Timeline & Overview (Years 12 & 13)



Introduction

Plymouth University Peninsula Schools of Medicine & Dentistry (PU PSMD) has a regional and national reputation for its widening participation work, and as part of our commitment to widening participation to medicine, dentistry and health courses, we undertake a series of initiatives in order to raise aspirations and awareness. The main aim is to help target and support the least likely but most able students, regardless of their background. From an access perspective, the student life cycle now commences much earlier, and our programme starts at primary school age to help children think about a career in healthcare and what this means. The Peninsula Pathways to the Healthcare Professions Programme then continues the support to help them work up to the application and admissions process.



"The Peninsula Pathways to the Healthcare Professions provides an excellent opportunity to aspiring medical and dental students to develop their skills and knowledge in order to make an informed decision about their future career. Participation in the activities and accessing the support available provides valuable relevant evidence to enhance university applications. We positively encourage our students to get involved in this worthwhile programme."

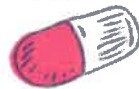
**Lynn Harris, Careers Co-ordinator,
Eggbuckland Community College.**

"The Pathways programme enables young people from all walks of life to get an opportunity to get a real look at roles in the medical and dental profession, helping them to make better decisions about their future career path."

**Lisa Neville, Education Projects Manager,
Education Business Partnership, Cornwall**

I would like to thank you for organising the programme, I found it very interesting and it has given me a better insight into what medicine is like. It has confirmed that this is a profession I'd like to pursue. Thank you for the opportunity.

**Pupil, Year 10, Torpoint School
Work Experience**



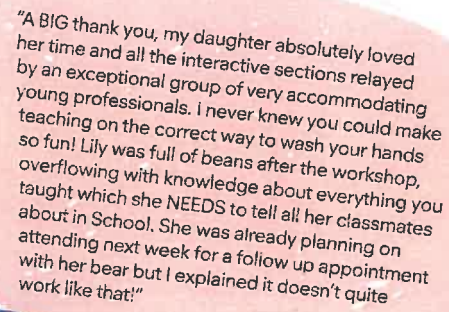
Primary Years



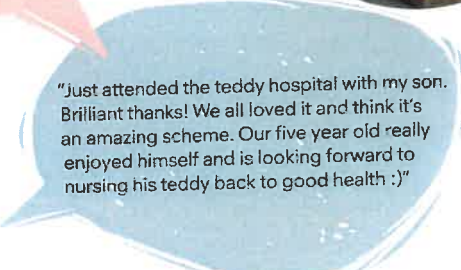
The Devon and Cornwall Children's University is part of a national organisation offering children aged 5-14 years an exciting and innovative programme of high quality learning opportunities, with a focus on rewarding participation, raising aspirations and encouraging engagement with learning. It also offers parents a more informal and accessible way to become involved in their children's learning, as Devon and Cornwall Children's University provision is delivered outside school hours, evenings, weekends and during school holidays. Children are given their own 'Passport to Learning' in which they travel to various learning destinations and collect hours of learning towards nationally recognised awards.

Children who participate are rewarded for their learning based on the number of hours attendance and are presented with Bronze, Silver or Gold certificates at a graduation ceremony organised through Devon and Cornwall Children's University.

As part of this national scheme, PU PSMD in partnership with Devon and Cornwall Children's University, offer 'learning destination' workshops. The aspiration building activities cover topics such as 'Teddy Bear hospital', 'My visit to the dentist' and 'Asthma & airways'.



"A BIG thank you, my daughter absolutely loved her time and all the interactive sections relayed by an exceptional group of very accommodating young professionals. I never knew you could make teaching on the correct way to wash your hands so fun! Lily was full of beans after the workshop, overflowing with knowledge about everything you taught which she NEEDS to tell all her classmates about in School. She was already planning on attending next week for a follow up appointment with her bear but I explained it doesn't quite work like that!"



"Just attended the teddy hospital with my son. Brilliant thanks! We all loved it and think it's an amazing scheme. Our five year old really enjoyed himself and is looking forward to nursing his teddy back to good health :)"



Email: psmd-outreach@plymouth.ac.uk | Tel: +44 (0)1752 437337 or 437429 | Further information: www.plymouth.ac.uk/peninsula/widening-access

Teddy Bear Hospital

Teddy Bear Hospital is part of a national scheme for primary school children. The main aim is to provide a positive and fun experience for children, whilst at the same time building trust and reducing their anxiety when visiting a doctor or going into hospital.



Our 'Teddy Doctors' are our volunteer medical students (WAMS), who visit local primary schools and offer hands-on workshop-based activities such as 'what's in the doctors bag', 'exploring sight', 'our skeleton and bones', 'hand hygiene' and a 'teddy consultation'. This national scheme is also a great way of getting children to think about health at an early age.



"I just wanted to say how great the Teddy Bear Hospital was! Our children absolutely loved it and it was such a lovely way to end our topic this half term. Please can you pass on our thanks to all of the students who made this experience possible for our children."

Year One Teacher/Leader,
Widely Court Primary School

Millfields Inspired

Millfields Inspired is a charity created by the Millfields Trust, whose aim it is to work with the seven primary schools in the Stonehouse area of Plymouth to get their Year 5 children thinking about the world of education and work. PU PSMD supports this programme by inviting school children to visit our facilities here in Plymouth and take part in various hands-on workshop-based activities.

This is a fabulous way of stimulating the children to think about the world around them and the different types of healthcare professions that are available. As the programme is delivered by our own students, this is a strong, positive message to the 9 and 10 year olds that this could be them in the not too distant future, delivering immense power and making future opportunities very realistic and achievable.



"Millfields Inspired objectives are to work with young people and their families from the neighbourhood, in order to provide a pathway from school to future career. It delivers the successful Widening Horizons programme into the seven local primary schools of Stonehouse. This programme, which is now in its tenth year, aims to inspire young people by giving them an experience and a taste for the world of work, in order to inform their future career choices.

This is a real 'hands-on' opportunity to use the equipment that doctors and dentists use and to understand and experience the different careers that are available within the medical and dental profession."

Josanne Stewart
Development Manager, Millfields Inspired



Secondary Years



Work Experience

Our work experience programme enables potential students in schools and colleges from Year 10 upwards to experience life as a medical or dental student for up to one week. Visiting students will sit in and observe our current students in their learning environment including Clinical Skills Resource Centre, Simulated Dental Learning Environment and the Life Science Resource Centre. There is also an opportunity to experience either a Problem Based Learning (Medicine) or Enquiry Based Learning (Dental) teaching session and to visit the state-of-the-art IT and e-Learning resources.

Please note that work experience placements are limited.



"Thank you so much for the work experience programme, I find year on year the positive effect work experience placements have on our young students. They come back with a buzz, new confidence and real focus."

Careers Co-ordinator, St Boniface School

"Thank you for allowing me to spend such an amazing week at the Peninsula Medical School. I enjoyed it so much and I'd love to do it all over again. It has really influenced my medical interests! The students who ran the programme were so lovely and welcoming."

Amy, Year 10

"I would like to thank you and the students from Peninsula Medical School for the amazing work experience last week. I found it all very interesting and now I am pretty much certain I would like to go into Medicine."

Lauren, DHSG, Year 10

"I really wanted to thank you again for the positive work experience at Peninsula Dental School; I found the 3 days thoroughly enjoyable and feel as though I have been given a really valuable insight into dentistry which has made me even more determined to pursue a career in this field. I'm looking forward to any further courses/workshops on the pathways programme that Peninsula may offer in the future."

Haseebah, Kingsbridge Community College, Year 12

"I just wanted to say a HUGE thank you for the incredible opportunity. I have learnt so much and it has been such a fun and useful experience. It has not only confirmed what I would like to study at university (Dental Hygiene and Therapy), but also has boosted my confidence in presenting to a group. Thank you for organising and running such a stimulating programme of events for us to participate in. I enjoyed every minute of it and hope to visit again in the near future."

Eleanor, Bodmin College, Year 12

"I enjoyed the simulated learning environment, and also experiencing the different types of learning. I have learnt the importance of being good at communicating as a dentist. Also the complexity of the issues that dentists must overcome, and how to perform various dental procedures. I would like to have a career in dentistry!"

Pupil, Year 11



e-Mentoring Scheme

Our e-Mentoring Scheme is an online resource that provides the opportunity for potential medical or dental students in schools from Year 10 or above to be mentored by a PU PSMD medical or dental student. This is a secure platform for students to hear first hand experiences of our application and interview processes, and hints and tips on personal statements. It also offers students the opportunity to ask various questions about the medical and dental courses and general questions about life as a medical or dental student. This scheme gives extra support from a mentor who will offer you information and guidance to help you feel prepared for your next steps.

Brightside online mentoring

"So far my mentoring with Michael has been amazing. I've been learning so much every day and it's been an absolutely amazing experience so far. I'm always excited to receive an e-mail from Brightside."
Dental mentee

"The student ambassadors from PSMD have contributed enormously to the careers events and projects we run in schools and colleges. They always demonstrate a real passion for their subject which generates genuine excitement with pupils involve, giving young people from a wide range of backgrounds to get an insight into healthcare professions."

Lisa Neville, Education Projects Manager, Education Business Partnership



Widening Access to Medical & Dental Schools

PU PSMD's widening access to medical & dental school workshops are student-led interactive sessions aimed to inspire, inform and support students in applying to medical or dental schools. WAMS & WADS students encourage potential students from non-traditional backgrounds to engage, debunking some of the myths surrounding medical and dental schools, such as "only private/grammar school students are accepted", not wanting any student to feel that they cannot pursue their ambition to be a future healthcare professional because of their family or school circumstances.

In addition WAMS & WADS students support almost all of the PU PSMD widening participation events and Open Days, including facilitating the Teddy Bear Hospital workshops. They also attend career fairs and assemblies held at local schools and colleges, run mock interview sessions and give tips and advice on personal statements upon request. Our volunteers are passionate about teaching and helping a wide range of students pursue a healthcare professional degree. Sometimes a visit from them will start school students thinking about university education when they haven't before.

wams@pcmd.ac.uk
wads@plymouth.ac.uk

"I found it very interesting and it has given me a better insight into what dentistry is like. It has confirmed that this is the profession I'd like to pursue. Thank you for the opportunity."

Year 10 pupil,
Coombe Dean School

British Science Week

British Science Week (BSW), formerly National Science & Engineering Week (NSEW) is a ten-day programme of science, technology, engineering and maths events and activities across the UK.

Each year during March, PU PSMD as part of our 'Science Lab for Schools' programme, invite pupils in Year 9 from local schools and colleges to take part in hands-on laboratory-based science activities using some of the same techniques that we use for our medical research. Visiting students are able to meet staff and students who are doing the research into the biological basis of human diseases, such as cancer and disorders of the nervous system. The pupils take part in three different activities such as extracting DNA (using bananas), culturing cells in the laboratory and using the fruit fly to model and understand human disease.



Professor David Parkinson



"Excellent day, opportunity to use Lab equipment and see science being practiced. The staff and researchers were very patient"

Pupil, Plympton Academy



Nuffield Research Placements

The Nuffield Foundation helps provide over 1,000 students each year with the opportunity to work alongside professional scientists, technologists, engineers and mathematicians. Students in the first year of a post-16 science, technology, engineering and maths (STEM) course are eligible to apply. Placements are available across the UK in universities, commercial companies, voluntary organisations and research institutions. Placements are administered at a regional level by Nuffield coordinators.

Each year PU PSMD host Nuffield Research Placements (previously Nuffield Science Bursaries) during the summer months based in our research laboratory at the John Bull Building in Plymouth. This placement programme is an excellent way for visiting students to gain valuable hands-on experience of a professional research environment and a great insight into the world of research. Students have the opportunity to spend 4-6 weeks working on their project alongside our researchers. Travel expenses are covered by the Nuffield Foundation and additional bursaries are available for students from low income households.

To find out more about the scheme or to make an application for a Nuffield Research Placement visit the Nuffield website:

www.nuffieldresearchplacements.org

or contact the Regional Coordinator:

Rachel Delourme rdelourme@cornwall.gov.uk

Outreach Events

Students on the human and health programmes have an opportunity to become involved in outreach events for primary and secondary school children, and the wider public.

Our students are involved in promoting and generating interest in science at the Scitech Showcase event, Big Bang South West, Pathways to Health, and many more.



"PSMD provides Nuffield Research Placements to year twelve students giving them a rare opportunity to work alongside people and in places they would never normally have access to. PSMD gives them huge support to pursue and demonstrate a passion for their subject by contributing to real-life research which has clear scientific outcomes."

**Rachel Delourme, Nuffield Research Placement
Regional Co-ordinator
(Cornwall, Devon & Dorset)**



Pathways Programme (Years 12 & 13)

As part of Peninsula Pathways to the Healthcare Professions we offer further support and guidance to potential students from backgrounds which are underrepresented in higher education through various engagement in activities and events.

This programme takes place in Years 12 & 13 and offers further support to potential students in areas such as study skills, reflective writing and ethics and debating sessions. UKCAT practice workshops, ethical scenario based mock interviews, taster days and the opportunity to join the e-Mentoring Scheme are also offered as part of the programme.

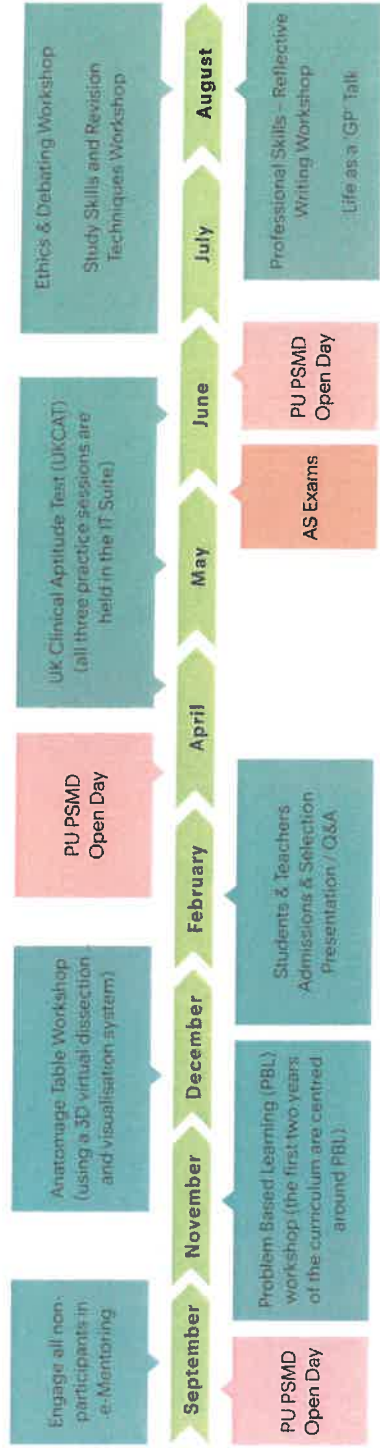
**Students are recruited from schools and colleges in the South West of England region.*



MEDICINE

BMBS (Medicine) Year 12

Key: Pathway Activities ■ Faculty Activities ■ External Activities ■

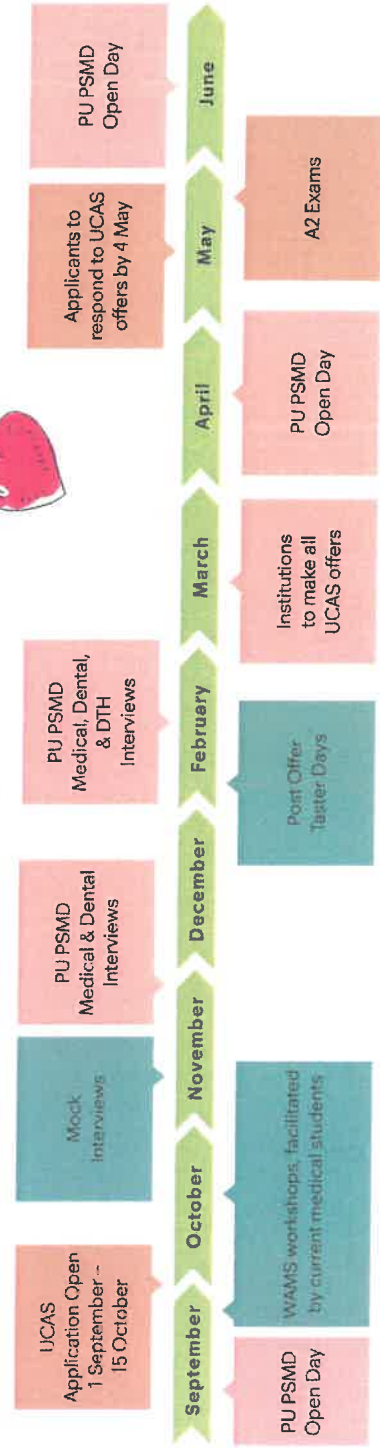


Continual Support accessible from e-mentor and Admissions team

MEDICINE

BMBS (Medicine) Year 13

Key: Pathway Activities ■ Faculty Activities ■ External Activities ■

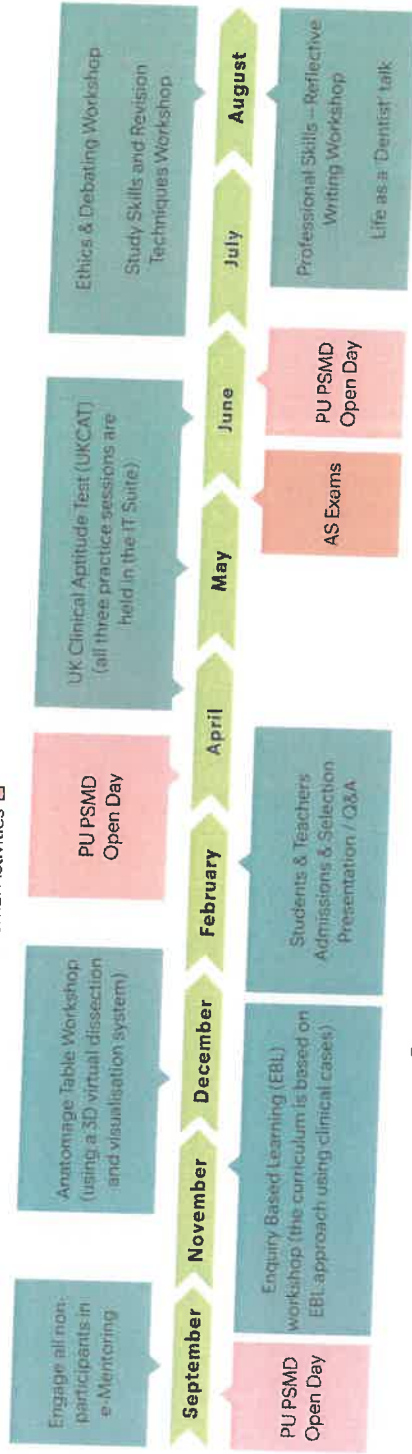


Continual Support accessible from e-mentor and Admissions team

DENTISTRY

BDS (Dentistry) Year 12

Key: Pathway Activities  Faculty Activities  External Activities 

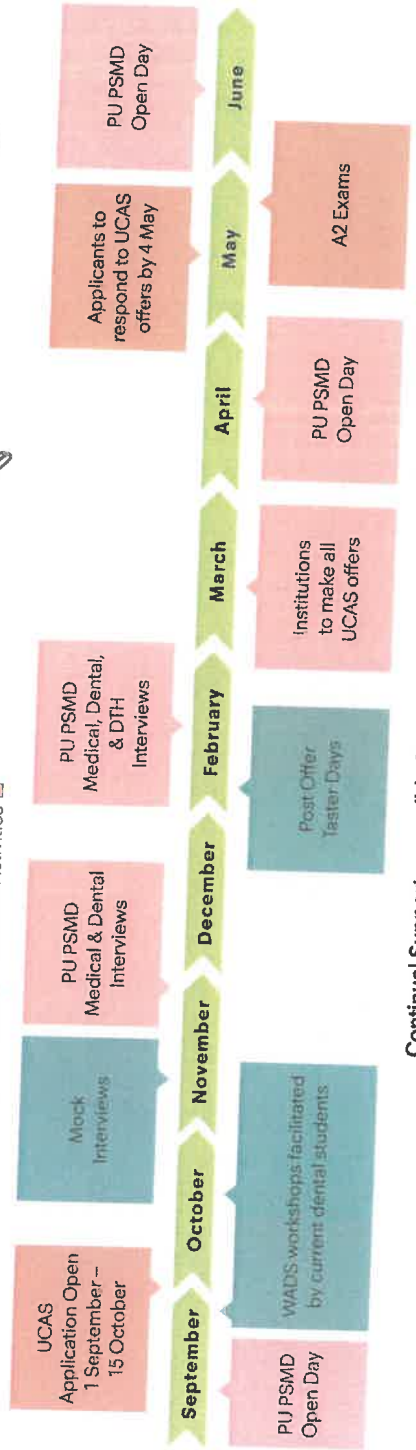


Continual Support accessible from e-mentor and Admissions team

DENTISTRY

BDS (Dentistry) Year 13

Key: Pathway Activities  Faculty Activities  External Activities 

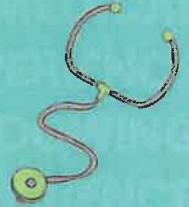


Continual Support accessible from e-mentor and Admissions team

The timeline for the workshops may vary due to teaching room availability

PLYMOUTH UNIVERSITY PENINSULA

SCHOOLS OF MEDICINE AND DENTISTRY



OPEN DAYS

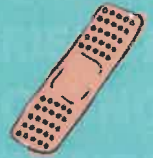
We encourage potential students to attend as many open days as possible as this is a great opportunity to learn more about studying the courses, gain an understanding of the curriculum structures and how they are taught. You will also be able to speak with current students and staff, and find out more about the admissions and application processes. Our Faculty Open Day provision is structured to allow you to get involved with interactive activities in our teaching facilities on the main University campus.



Medicine & Dentistry Admissions

Tel: +44 (0)1752 437333

E: meddent-admissions@plymouth.ac.uk



Plymouth University
Peninsula Schools of Medicine & Dentistry
The John Bull Building, Research Way
Plymouth Science Park, Plymouth, PL6 8BU



PSMD-outreach@plymouth.ac.uk

Tel: +44 (0)1752 437337

Full course details: www.plymouth.ac.uk/peninsula



The University is committed to the promotion of equality and diversity. If you require this publication in an alternative format, please contact us on the number above.