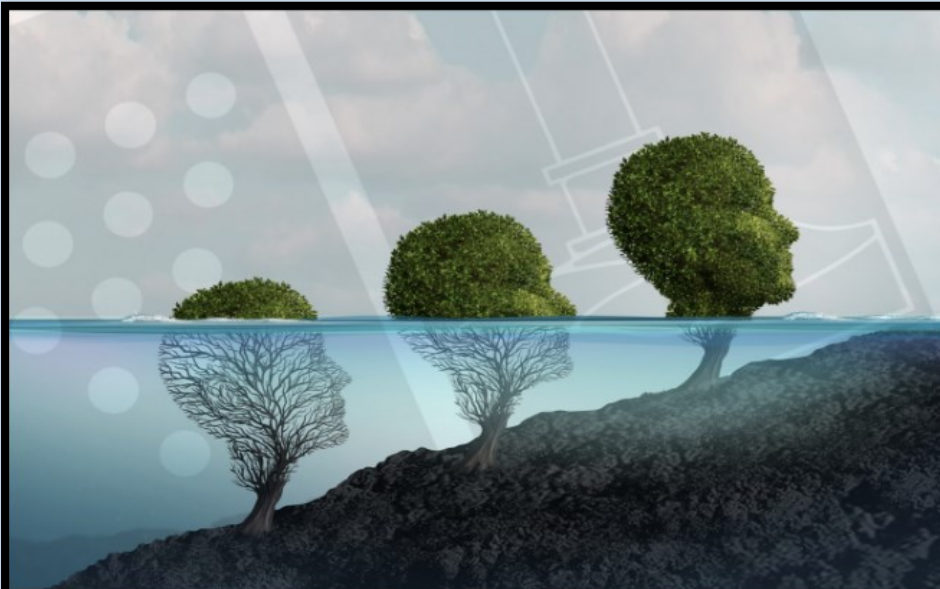


# A Level Courses 2024

## Psychology



## Entry Requirements

### Minimum:

Standard Entry Requirements:  
5 GCSE's at a grade 4 or above and Grade 5 in English Language preferred.

### What will you learn:

The two year A Level Psychology course enables you to learn about:

**Social Influence** – conformity and obedience. **Memory** – how memory works and eye witness testimony. **Attachment** – formation of attachments and early attachments. **Psychopathology** – explanations for abnormal behaviours and treatments.

**Approaches in Psychology** – conditioning, social learning, cognitive and biological approaches. **Research Methods** – research, designs and investigations.

**Biopsychology** – biological rhythms, the brain and the nervous system.

**Issues and Debates** – free will, determinism, nature-nurture debate, holism, reductionism, gender and cultural bias, ethical implications and social sensitivity in undertaking research.

Students also select one option from each of the following sections:

**Section B** – Relationships, Gender or Cognition and Development.

**Section C** – Schizophrenia, Eating Behaviour or Stress,

**Section D** – Aggression, Forensic Psychology or Addiction.

### Elements of the course:

Throughout the two year course you will have the opportunity to engage in studying and evaluating psychological theories and research by means of group and independent activities, teacher-led sessions, compiling research and undertaking presentations.

### Where could it take me?

The possibilities for career paths with a Psychology A Level are diverse. Previous students who pursued this subject have ventured into higher education, successfully completing degrees in fields such as Biomedical Science, Psychology, Nursing, Midwifery, and both Primary and Secondary Education.

### Assessment:

The assessment for this course is 100% examination at the end of the two years.